



Stonecroft, Main Street | Wreilton, YO18 8PG

Stonecroft is an attractive mid terrace stone built two bedroom cottage offering well proportioned accommodation lying over two floors being situated in the attractive village of Wreilton lying West of Pickering.

The accommodation enjoys the benefit of double glazing, gas fired central heating and has many internal features including beams to ceilings.

Externally the cottage has a pleasant garden and parking area.

Wreilton lies approximately four miles West of Pickering and is within easy driving distance of the local amenities and recreational facilities which the market town of Pickering has to offer.

This property is offered with no onward chain and viewing is highly recommended.



Guide Price £240,000



Accommodation Comprises

Entrance door (rear)
Gives access to the kitchen

Kitchen
15'3" x 5'8" (4.65m x 1.73m)

Housing a range of shaker style units comprising wall and base units incorporating drawer compartments with tiled splash backs, single drainer sink unit with mixer tap over, plumbing for automatic washing machine and dishwasher, central heating radiator, double glazed window to the rear elevation.

Dining Room

12'6" x 11'8" max 10'1" min (3.81m x 3.56m max 3.07m min)

With laminate flooring, exposed timbers to ceiling, two double glazed windows to the front elevation, central heating radiator.

Stairs to first floor landing, door to cloakroom

Cloakroom

With low flush w.c, wash hand basin, tiled splash back.

Sitting Room

16'3" x 9'5" (4.95m x 2.87m)

With brick fireplace, open fire, exposed timbers to ceiling, double glazed windows to the front and rear elevations, central heating radiator.



First Floor

Landing with built in cupboard housing boiler and additional storage.

Bedroom One

13' x 11'11" (3.96m x 3.63m)

With central heating radiator, built in wardrobes with cupboards above, double glazed window to the front elevation.

Bedroom Two

10'6" x 9'8" (3.20m x 2.95m)

With central heating radiator and double glazed window to the front elevation.

Bathroom

Comprising panelled bath, shower unit over and shower screen, wall tiling, pedestal

wash hand basin with strip light over, low flush w.c., skylight window, chrome heated towel rail.

External

A gravelled driveway leads to car standing.

Rear garden with laid lawn, attractive flower/shrubbery borders and garden shed.

Services

Mains electricity, gas, water and drainage are connected.

Note

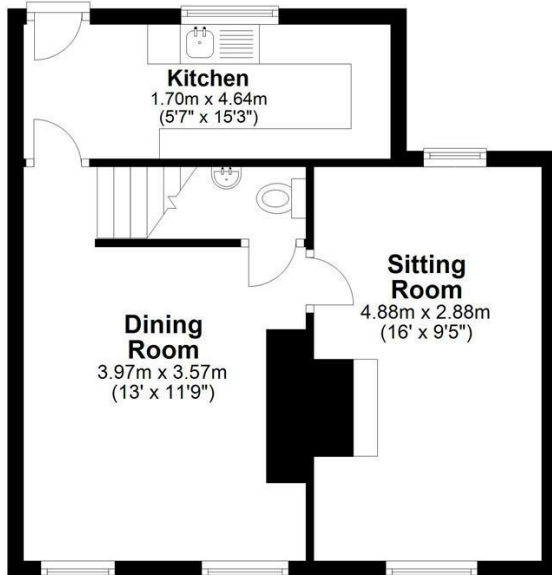
Stonecroft has a right of way over the rear of the neighbouring property to their gravelled drive/car parking.



Stonecroft, Main Street | Wrelton

Ground Floor

Approx. 40.8 sq. metres (439.3 sq. feet)



First Floor

Approx. 34.2 sq. metres (367.7 sq. feet)



Total area: approx. 75.0 sq. metres (807.1 sq. feet)

Stonecroft, Wrelton

VIEWING

Strictly By Appointment with the agents

COUNCIL TAX BAND

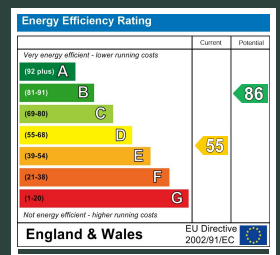
ENERGY PERFORMANCE RATING

D

St Georges House 39 Market Place, Pickering, YO18 7AE

t: 01751 472724

e: pickering@boultoncooper.co.uk



boultoncooper.co.uk



CONSUMER PROTECTION FROM UNFAIR TRADING REGULATIONS 2008

The description contained in this brochure is intended only to give a general impression of the property, its location and features, in order to help you to decide whether you wish to look at it. We do our very best to provide accurate information but we are human, so you should not allow any decisions to be influenced by it. For example any measurements are approximate and, where such things as central heating, plumbing, wiring or mains services are mentioned, we would advise you to take your own steps to check their existence and condition. Although we cannot accept any responsibility for any inferences drawn from this brochure or any inaccuracy in it, we shall always try to help you with any queries.

BoultonCooper for themselves and for the vendors or lessors of the property/properties, whose agents they are, give notice that (i) the particulars are produced in good faith, are set out as a general guide only and do not constitute any part of the contract; (ii) no person in the employment of BoultonCooper has any authority to make or give representation or warranty whatever in relation to this/these property/properties.

BC
Est. 1801